

RABBIT ANTI-ALPHA SYNUCLEIN, phospho Serine 129 AFFINITY PURIFIED POLYCLONAL ANTIBODY

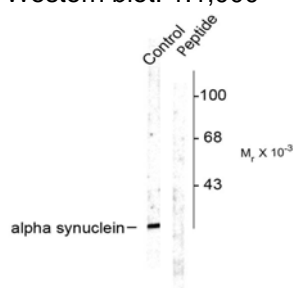
CATALOG NUMBER: AB9850 QUANTITY: 100 µL

LOT NUMBER:

SPECIFICITY: Alpha Synuclein, phospho Serine 129. The antibody recognizes a protein of ~15 kDa corresponding to alpha synuclein, phospho Serine 129 in lysates from rat cortex. Immunolabeling is blocked by preadsorption with the phospho-peptide used as the immunogen but not by the corresponding dephospho-peptide.

IMMUNOGEN: Synthetic peptide of amino acids surrounding the phosphoSerine 129 site of rat alpha synuclein.

APPLICATIONS: Western blot: 1:1,000



Western Blot of rat brain cortex.

Optimal working dilutions must be determined by the end user.

SPECIES REACTIVITIES: Rat. Other species have not been tested. The immunogen has 100% homology with human, mouse, non-human primate, bovine and canine.

FORMAT: Affinity purified immunoglobulin

PRESENTATION: Liquid in 10 mM HEPES (pH 7.5), 150 mM NaCl, 100 µg/mL BSA and 50% glycerol.

STORAGE/HANDLING: Maintain at -20°C in undiluted for up to 6 months after date of receipt. Avoid repeated freeze/thaw cycles. Do not store in a self defrosting freezer.

RELATED REFERENCES:

Okochi M, Walter J, Koyama A, Nakajo S, Baba M, Iwatsubo T, Meijer L, Kahle PJ, Haass C (2000) Constitutive phosphorylation of the Parkinson's disease associated alpha-synuclein. *J Biol Chem* Jan 7; **275**(1): 390-7.

Neumann M, Kahle PJ, Giasson BI, Ozmen L, Borroni E, Spooen W, Muller V, Odoy S, Fujiwara H, Hasegawa M, Iwatsubo T, Trojanowski JQ, Kretzschmar HA, Haass C (2002) Misfolded proteinase k resistant hyperphosphorylated alpha-synuclein in aged transgenic mice with locomotor deterioration and in human alpha synucleinopathies. *J Clin Invest* Nov; **110**(10):1403-5.

Smith WW, Margolis RL, Li X, Troncoso JC, Lee MK, Dawson VL, Dawson TM, Iwatsubo T, Ross CA (2005) Alpha-synuclein phosphorylation enhances eosinophilic cytoplasmic inclusion formation in SH-SY5Y Cells. *J Neurosci* June 8; **25**(23):5544-5552.



Maslah E, Rockenstein E, Adame A, Alford M, Crews L, Hashimoto M, Suebert P, Lee M, Goldstein J, Chilcote T, Games D, Schenk D (2005) Effects of alpha-synuclein immunization in a mouse model of Parkinson's disease. *Neuron* Jun 16;**46**(6):857-868.

Important Note: *During shipment, small volumes of product will occasionally become entrapped in the seal of the product vial. For products with volumes of 200 μ L or less, we recommend gently tapping the vial on a hard surface or briefly centrifuging the vial in a tabletop centrifuge to dislodge any liquid in the container's cap.*

FOR RESEARCH USE ONLY; NOT FOR USE IN DIAGNOSTIC
PROCEDURES. NOT FOR HUMAN OR ANIMAL CONSUMPTION

Unless otherwise stated in our catalog or other company documentation accompanying the product(s), our products are intended for research use only and are not to be used for any other purpose, which includes but is not limited to, unauthorized commercial uses, in vitro diagnostic uses, ex vivo or in vivo therapeutic uses or any type of consumption or application to humans or animals.

©2006 - 2011: Millipore Corporation. All rights reserved. No part of these works may be reproduced in any form without permission in writing.