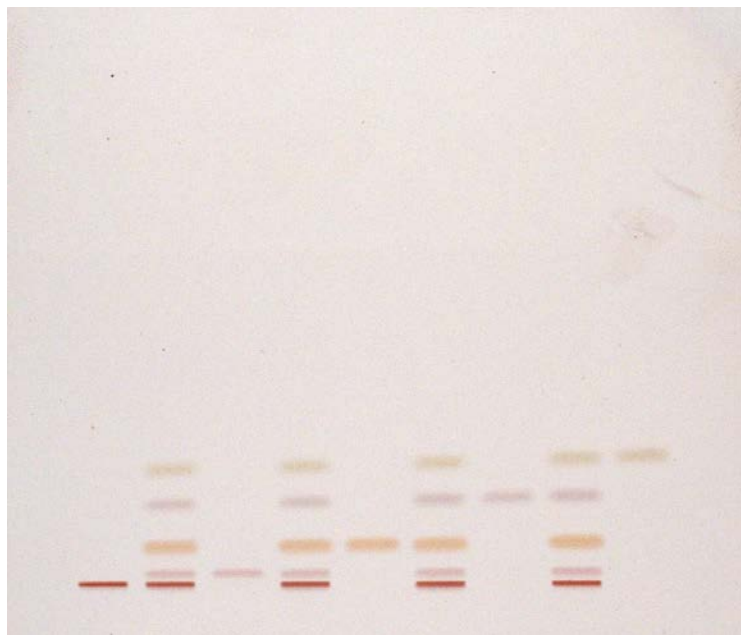


Separation of steroids

Plate	HPTLC Silica gel 60 RP-18 WF254s 10x10cm (P/N 1. 13124)
Mobile phase (v/v)	Methanol/water (60/40)
Migration distance	5 cm
Application volume	1 μ L
Chamber	Normal chamber without chamber saturation
Detection	20% perchloric acid in ethanol spray 20s and heat 5min at 100°C, Detection white



Chromatographic data

No.	Compounds	Concentration (mg/ml)	Solvent	hRf
1	cholesterol	1,25	methanol	0
3	stanozolol	1,25	methanol	4
5	methyl testosterone	1,25	methanol	12
7	reichstein's S	1,25	methanol	26
9	hydrocortisone	1,25	methanol	37
2, 4, 6 and 8	steroid mixture	1,25	methanol	-