

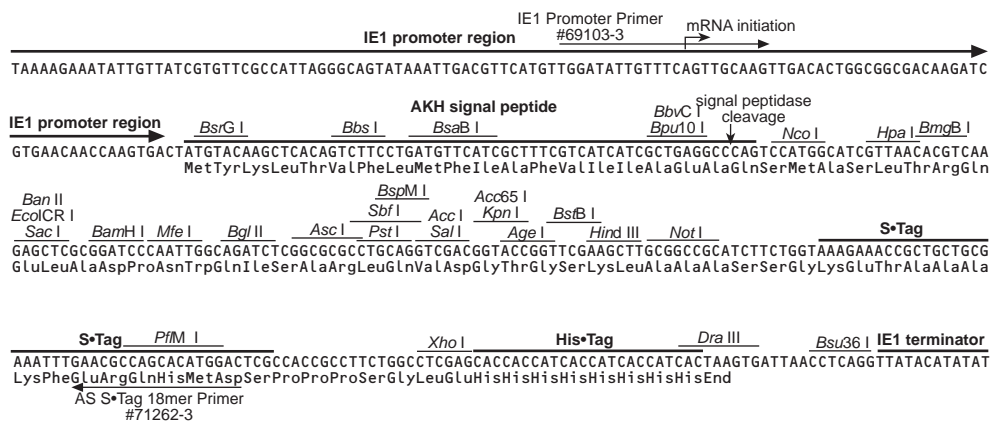
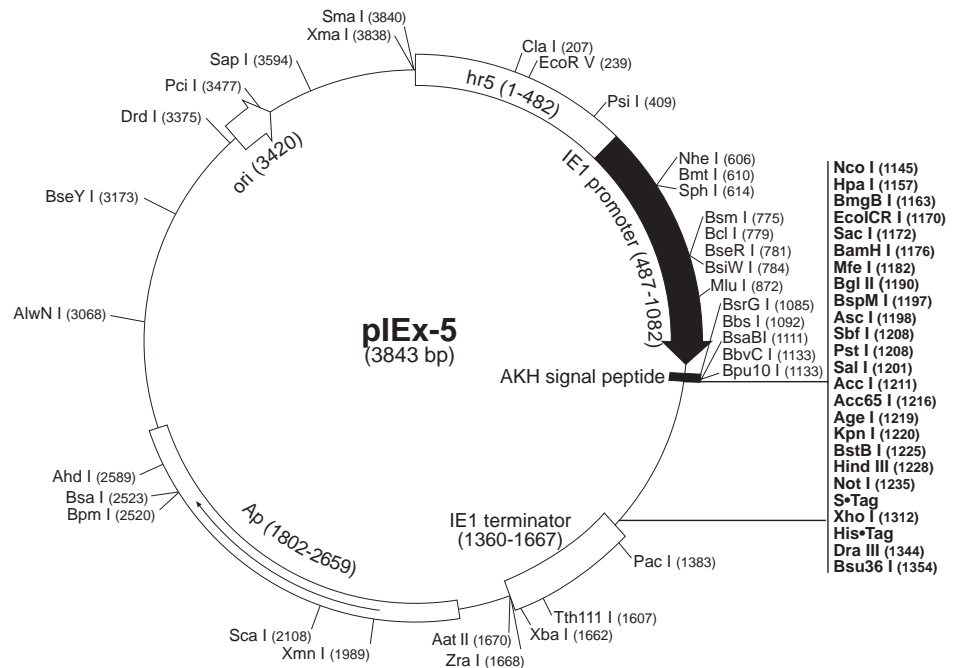
# pIEx-5 Vector

	<b>Cat. No.</b>
pIEx-5 DNA	71242-3

## pIEx-5 sequence landmarks

hr5 enhancer	1-482
IE1 promoter	487-1082
IE1 transcription start	1034
AKH signal peptide	
coding sequence	1084-1140
Multiple cloning sites ( <i>Nco</i> I- <i>Dra</i> III)	1145-1347
S•Tag™ coding sequence	1256-1300
His•Tag® coding sequence	1318-1341
IE1 terminator	1360-1667
<i>bla</i> (Ap) coding sequence	1802-2659
pUC origin	3420

The pIEx™ vectors are designed for cloning and high-level expression of proteins in transiently transfected *Spodoptera*-derived insect cells. Transcription is driven by the AcNPV-derived hr5 enhancer and immediate early promoter, IE1. pIEx-5 encodes the signal peptide of adipokinetic hormone (AKH) to allow secretion of the expressed protein, and C-terminal S•Tag and His•Tag coding sequences. Unique sites are shown on the circle map.



## pIEx-5 cloning/expression region

## pIEx-5 Restriction Sites

TB352 0303

Enzyme	# Sites	Locations	Enzyme	# Sites	Locations		
AatII	1	1670	Eco57MI	3	1923 2520 2935		
Acc65I	1	1216	EcoICRI	1	1170		
AccI	1	1211	EcoRI	6	83 185 292 365 472		
AccI	3	1617 1987 2360			3833		
AflIII	5	192 372 872 1159 3477	EcoRV	1	239		
AgeI	1	1219	FspI	2	654 2366		
AhdI	1	2589	HaeII	2	3237 3607		
AlwNI	1	3068	HincII	3	1044 1157 1212		
ApaLI	2	1917 3163	HindIII	1	1228		
AscI	1	1198	HpaI	1	1157		
Asel	5	831 1383 2414 3649 3708	KpnI	1	1220		
AvaI	2	1312 3838	MfeI	1	1182		
BamHI	1	1176	MluI	1	872		
BanI	3	1216 2636 3733	MslI	3	1818 2177 2336		
BanII	1	1172	NcoI	1	1145		
BbsI	1	1092	NheI	1	606		
BbvCI	1	1133	NotI	1	1235		
BceAI	5	68 174 731 1416 2977	NspI	3	614 691 3481		
BcgI	2	1501 2051	NspV	1	1225		
BciVI	4	533 868 1752 3279	PacI	1	1383		
BclI	1	778	PciI	1	3477		
BglII	2	995 2471	PfiMI	2	1146 1287		
BglIII	1	1190	PinAI	1	1219		
Bme1580I	2	1921 3167	PpiI	2	1961 2771		
BmgBI	1	1162	Psil	1	409		
Bmrl	3	1134 1645 2549	Psrl	3	89 298 371		
BmtI	1	610	PstI	1	1208		
BpmI	1	2520	PvuI	2	207 2220		
Bpu10I	1	1133	PvuII	2	776 3657		
BpuEI	4	1985 2853 3094 3392	SacI	1	1172		
BsaAI	3	193 373 784	Sall	1	1210		
BsaBI	1	1111	SapI	1	3594		
BsaHI	2	1667 2049	SbfI	1	1208		
BsaI	1	2523	Scal	1	2108		
BsaWI	4	1219 2293 3124 3271	Sfcl	5	1204 1527 2343 3021 3212		
BsaXI	3	803 1514 3639	SmaI	1	3840		
BseRI	1	781	SmlI	5	1312 1964 2832 3109 3371		
BseYI	1	3173	SphI	1	614		
BsiEI	7	207 845 1238 2071 2220	Sse8387I	1	1208		
		3143 3567	Sspl	3	973 1544 1784		
BsiHKAI	5	1172 1319 1921 2006 3167	StyI	2	568 1145		
BsiWI	1	784	TaqII	3	2057 2242 3581		
BsmAI	2	1747 2523	TatI	3	724 1085 2106		
BsmI	1	775	TspGWI	6	552 587 636 790 1808		
Bsp1286I	5	1172 1319 1921 2006 3167			2150		
BspCNI	7	838 1125 1367 2101 2620	Tth111I	1	1607		
		2786 3195	XbaI	1	1662		
BspHI	2	1749 2757	XhoI	1	1312		
BspMI	1	1197	XmaI	1	3838		
BsrBI	4	863 1747 3548 3789	XmnI	1	1989		
BsrDI	2	2355 2529	ZraI	1	1668		
BsrFI	2	1219 2504					
BsrGI	1	1085					
BssHII	3	502 763 1198	Enzymes that do not cut pIEx-5:				
BssSI	3	793 1920 3304	AarI	AfeI	AfIII	AleI	Alol
BstBI	1	1225	Apal	AsiSI	AvrII	BaeI	BbeI
BstYI	8	1176 1190 1942 1959 2727	BfrBI	BlpI	BpII	BsgI	BsmBI
		2739 2825 2836	BsmFI	BspEI	Bst1107I	BstAPI	BstEII
Bsu36I	1	1354	BstXI	BstZ17I	EcoNI	EcoO109I	FalI
Btgl	1	1145	FseI	FspAI	KasI	MscI	NaeI
BtrI	1	1162	NarI	NdeI	NgoMIV	NruI	NsiI
BtsI	4	727 2170 2190 3697	PfoI	PmeI	PmlI	PpuMI	PshAI
Clal	1	207	PspOMI	RsrII	SacII	SanDI	SexAI
Dral	3	2011 2703 2722	SfiI	SfoI	SgrAI	SnaBI	SpeI
DraIII	1	1344	SrfI	StuI	Swal	XcmI	
DrdI	1	3375					
EaeI	4	842 1235 2196 3638					
EagI	2	842 1235					
EarI	2	1790 3594					
Ecil	4	916 2447 3275 3421					
Ecl136II	1	1170					
Eco57I	2	1923 2935					