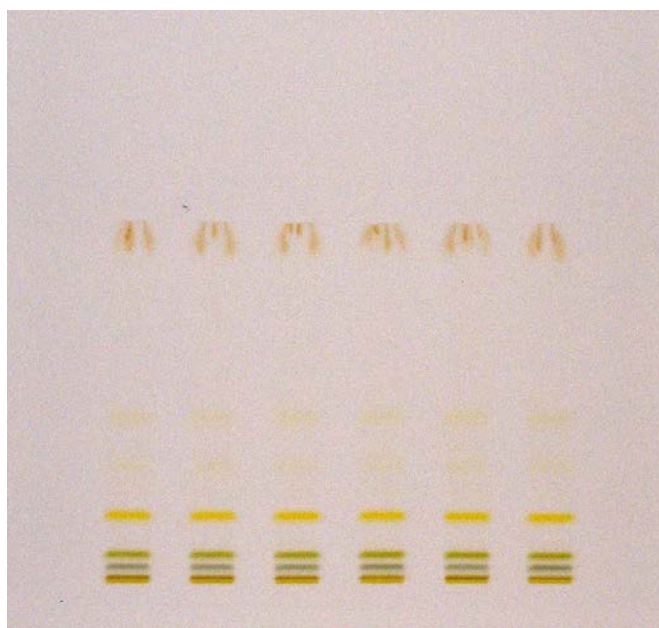


Separation of plant pigments

Plate	HPTLC Silica gel 60 RP-18 F254s, 10x10cm (P/N 1. 13724, alt P/N 1. 16225)
Mobile phase (v/v)	Methanol/acetone/water (6/6/1)
Migration distance	5 cm
Application volume	5 µL
Sample preparation	Millig leafs in a motar with acetone
Chamber	Normal chamber without chamber saturation
Detection	Detection white light



Chromatographic data

No.	Compounds	Solvent
1 to 6	leafs	acetone
	carotenes	
	pheophytin	
	chlorophyll a	
	chlorophyll b	
	lutein	
	violaxanthin	
	neoxanthin	